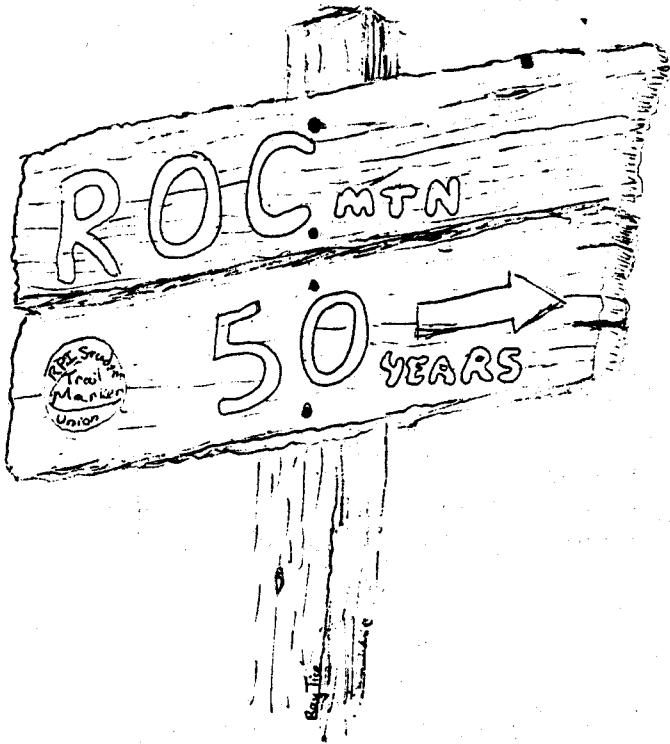




THE ROC CAIRN



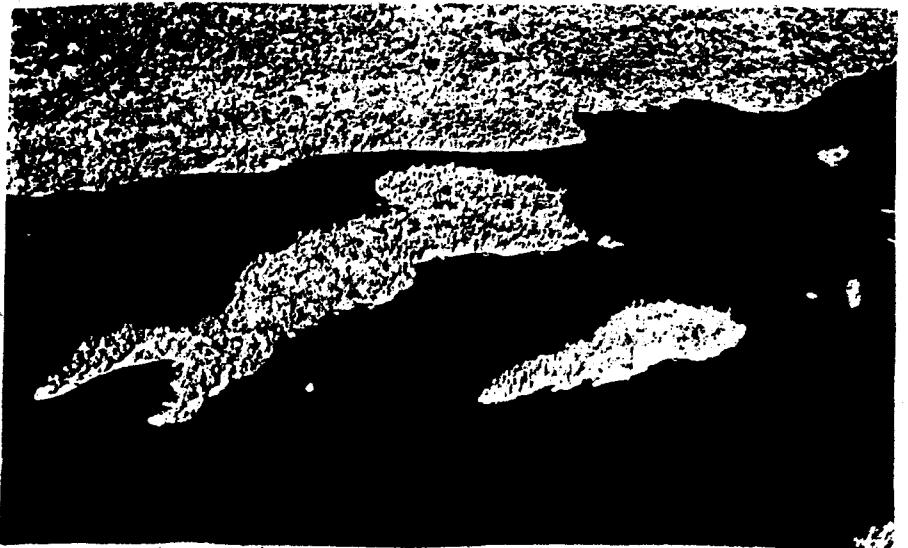
— RENSSELAER OUTING CLUB, INC. — 15TH ST. LOUNGE, R. P. I., TROY, NEW YORK —



SEPT. '85

WELCOME!

FALL
LAKE
GEORGE



Turtle & Mohican Islands on Lake George



STUDENT ACTIVITY
FEE FUNDED

Message from the President.

Welcome to the Rensselaer Outing Club! What you have in your hands is your very own copy of the R.O.C. Cairn. This, believe it or not, is our version of a literary magazine. In a typical issue, you'd find interesting stories about recent trips in the club, and maybe an article or two on some outdoor skill like how to belay someone. Interspersed would be a few horrible quips and jokes which you have been mercifully spared, for the time being.

Being that the semester has just started, we have yet to be swamped with the outlandish stories about summer trips to the Candian Rockies, the Smokies, Utah, and whatnot. And since you newcomers haven't had a chance to submit anything, it seemed fitting to make this into an introductory issue describing the club.

As you might have guessed, we welcome any contributions to The Cairn, so if you wish to become a published author, then you're only an article away!

Important notice!!! Election forthcoming!

The office of Cairn Editor will be filled by election at the Oct. 1st Meeting. Any dues paying patch member is eligible for the position, and all dues paying patch members may vote. If you cannot attend the meeting, please see Shawn McDonald for an absntee ballot.

Anniversary

As you might have guessed from the cover, the ROC has its 50th anniversary this year, so keep on the lookout for future Cairn articles and wopplers. It's also the 75th year for the oldest outing club in the country (Dartmouth), so maybe we should have twice as many wopplers.

Dues

To make it short, pay them! We keep a \$50,000 inventory of equipment for your use, and while the union provides us with some money, they expect us to come up with the rest. Dues are: \$6/semester or \$10/year. ~~By club rules, dues for grad students are 50% more.~~

What is the Rensselaer Outing Club (ROC)?

ROC is a union sponsored club that organizes trips of various types in the outdoors. These trips range from Mountaineering in Alaska and Caving in Mexico to a Sunday hike at Grafton State Park. We have trips for the beginner and for experts. By going on a series of progressively harder trips, you can build for an expedition, or keep to the easy ones "just for fun".

There are trips out every weekend almost year-round, so feel free to come on one any time. We supply all equipment (except clothing, food, and gas) free of charge, so it's a great way to try a sport, relax, and have fun. We car pool on the trips, so you don't even need a car!

If you can't make it to a meeting, no sweat, just check the trip lists posted outside the pit on Wednesdays and Thursdays. If you sign up for a trip there, be sure to contact the trip leader to find out what to bring, and how difficult a trip will be. (The pit is where we keep our equipment. It's located in the basement of the armory- the two big red doors. Trip lists are kept on the bulletin board just to the right of the doors.

We do all sorts of sports- canoeing, caving, rock climbing, ice climbing, kayaking, winter mountaineering, camping, hiking, cross country skiing, rafting, woppling.....

A Patch Member is...

1. Someone wearing a red chamois shirt with the ROC emblem on the right or left shoulder. The correct side has been forgotten.
2. Someone who has been on at least three different kinds of trips and at least one overnight.
3. Someone who has done some work for the club either at Fall Lake George or at a pit party.
(ed note: or for the Cairn!)
4. Patch members are current RPI students and, if they pay their dues, they can run for and vote in the elections of officers.

-By Guy Moffat

E-Comm

The executive committee of the Outing Club consists of all of the elected officers of the club. It meets to debate and decide on issues important to running the club. This way, most business can be handled effectively without dragging out the general meetings. Members are welcome to E-com meetings.

Club Officers

| | | |
|--------------------|------------------------------|----------|
| President | Ray Tice | 274-9266 |
| Vice-President | John Turi | 273-3693 |
| Equipment Chairman | Davis Chapman | 271-8341 |
| Treasurer, | Lee Schipper | 271-8341 |
| Secretary | Shawn McDonald | x-7965 |
| Member-at-Large | Guy Moffat | 274-9266 |
| Cairn Editor | (Victor Duck, acting editor) | |

Activities Chairmen

These people coordinate trips and equipment in their sport:

| | | |
|---|-----------------------|---------------|
| Canoeing | Davis Chapman | 271-8341 |
| Caving | Davis Chapman | 271-8341 |
| Climbing | Dave Sudlick | x-7998 |
| X-C. Skiing | Guy Moffat | 274-9266 |
| First Aid | Dave Mackesie | x-8679 |
| Historian | Dorothy Schuster | 272-3634 |
| Ice Climbing | Robert Galejs | 272-8912 |
| Kayaking | Bob Patraw | x-6243 (work) |
| Winter Mountaineering (includes camping & backpacking) | Howie (How-J) Kalnitz | 271-0316 |

Fall Lake George is a huge outing club festival on Turtle Island, shadowed by the majestic Tongue Mountain, in the beautiful, scenic Narrows of Lake George. Clubs from all over the northeast come for a wild time.

WHEN

..... Friday, October 4th (Registration starts about 1:00 PM), until Sunday afternoon, October 6th.

WHERE

..... On Turtle Island of Lake George, reached by canoe from the village of Bolton Landing (on NY route 9N, on the west shore of the lake, 10 miles north of Lake George Village).

SCHEDULE OF EVENTS

- Friday, Oct. 4
Registration starting at 1pm
Canoe to island
Set up camp
Campfires, song fests, sleep(?!)
- Saturday, Oct. 5
Registration till noon for late arrivals
Hike and climb Black or Tongue Mountains
Visit the waterfalls
Swim, "gunnel pumping"
Canoe on the lake
Sail ???
- Saturday Night
Square dance and cider on neighboring Mohican Island
Campfire jam session + sing alongs
- Sunday, Oct. 6
Do anything
Pack up and head for home (or school, if you prefer)
Attend church in Bolton Landing

TO SIGN UP

- Fill out the sheet at the end of the magazine and turn it in with your money to John Turi or Guy Moffat. Be sure to check the lists outside the pit the day before you leave to find out who your driver is (or who your riders are) and when to leave.

| | | |
|--------------------------------|----------|------------------|
| IOCA Registration fee | \$ 5.00/ | per person. |
| Food with ROC | 12.00 | (includes steak) |
| Canoe Rental | 35.00 | per canoe. |
| or | | |
| Transportation by powerboat | 8.00 | round trip |

..... A damage deposit of \$10.00 will be required for each canoe.

WHAT TO BRING

..... Shelter

There are no closed shelters on the island, but there are some tent platforms. Tents or poly-tarps are nice if it rains. Ground cloth and a warm sleeping bag are a must. If you need equipment, be sure to fill in the equipment request form.

..... Clothes

WOOL! and LAYERS! The weather at Lake George can range from the sunny seventies to the frosty forties, or even dip into the twenties at night. FLG fashion wardrobe: warm shirts, sweaters, jackets, hat, jeans, long underwear, shorts, hiking boots, sneakers for the square dance, raincoat or poncho, bathing suit, sun glasses and beach towel. Wool is best because it keeps you warm even when it's wet - Don't forget we will be on a lake. If you forget rain gear then it's guaranteed to rain.

..... Fork, knife, spoon, plate, and cup (much like that used in the Commons)

..... Miscellaneous

Flashlights or lanterns (every canoe travelling at night must carry a light and use it). Camera and film for shutterbugs. Any musical instruments - from recorders to mandolins. Three or four large plastic bags for garbage and for keeping things dry.

WHAT NOT TO BRING

..... NO firearms, drugs, or alcoholic beverages are allowed - this is an IOCA rule.

IMPORTANT

..... Each canoe must carry a flashlight when travelling at night. This will be strictly enforced and checked before you leave Bolton Landing; powerboat drivers must see where you are!

Be careful while canoeing, especially at night. Canoes must travel in groups at night. Know the canoeing safety rules and what to do in case of capsizing. (STAY WITH THE BOAT and get to shore to dry out) Also, pair up the less experienced with the more experienced.

..... Maps will be issued to canoeists. Be sure to get one. They show how to get to Turtle Island, the Waterfalls, and Black Mountain. The southwest end of Turtle Island will be lit with lights most of Friday night to aid in navigation.

..... Please leave your campsite clean - burn all burnable garbage and transfer the rest to the R.O.C. site. DO NOT leave it on the mainland. The N.Y.S. Department of Conservation will remove the garbage for us from the R.O.C. site, but we will have to pay extra to have it taken at the mainland.



Guy Moffat

Fall Lake George Information Sheet.
(one person per sheet!!!!!!!!!!)

Name _____ Phone _____

Address _____

Do you need a ride? _____ Do you have a car? _____ # of passengers _____
Is it a gas guzzler? _____

What time would you like to leave for Lake George?

Earliest _____ Desired _____ Latest _____

Food: Omnivore _____ Vegetarian _____ Carnivore _____

Canoe? _____ With whom? _____ Ride on Powerboat? _____

Costs: IOCA Registration: \$5; Food: \$12 (vegetarian \$10);
Canoe: \$35 per canoe, \$10 deposit; or Powerboat ride \$8 /wknd
Share cost of gas with driver.

Equipment Request

Note: please bring your own gear if you have it.

Name _____

Tent? _____ Who would you like to sleep with? _____

Sleeping Bag? _____

IMPORTANT!

Be sure to pick up your gear during normal pit hours, beforehand.
See Davis Chapman for details.